

# Modular Multiples®

Layered®  
Surface Mounted



**Modular International Inc.**  
3941 California Avenue  
Pittsburgh, PA 15212  
1-412-734-9000  
[www.modularinternational.com](http://www.modularinternational.com)

This leaflet contains products covered under one or more of the following US Patent Numbers:

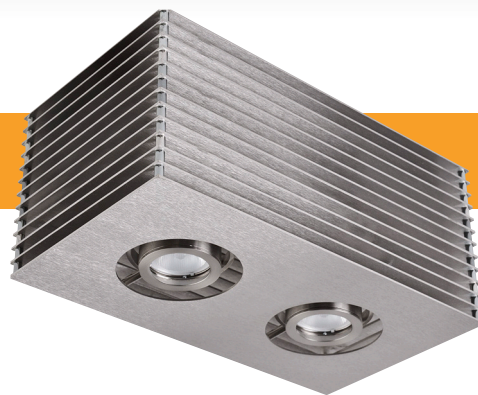
6,568,826B1	6,692,139B2	6,820,999B2	7,207,698B2
6,896,391B2	6,969,182B2	6,997,267B2	6,997,574B2
7,036,953B2	6,745,785B2	7,300,176B2	7,478,921B1
D520,666S	D530,038S	D537,553S	D819,857
D818,632	D818,624	D818,623	8,740,407
8,511,860	8,231,242	8,210,720	7,832,907

Modular International, Inc. produced a major portion of the lighting for the project shown. The photograph, however, is not intended to imply that the various owners of the projects endorse our products or use our products exclusively.

# Modular Multiples®



## Layered Surface Mounted



- Configurations:** 1, 2, 3, 4 light units with round apertures standard, custom available - patented
- Fixture body:**
- 14 gauge laser cut stainless steel plates
  - Patented die-cast aluminum ring sets
  - Optional patented locking device for ring sets
  - Capable of holding 2 filter media up to 1/8" thick each
  - Can be wall, ceiling canopy or pendant mounted with 1/16" braided stainless steel cables



[Download CSI drop-in specifications template](#)

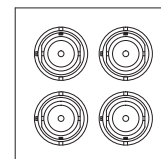
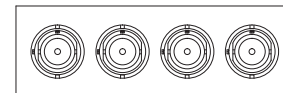
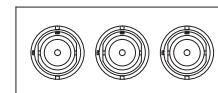
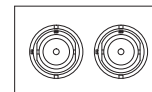
- Finishes:**
- Stainless steel / satin nickel standard
  - Powder coated custom colors available

- Electrical:**
- Internal electronic power supply(s) / transformer(s) / ballast(s)
  - Dimmable (not applicable on HID products)
  - One power supply / transformer per lamp allowing for multi-circuit wiring
  - 120v and 277v available
  - Listed to UL1598 standards

- Light Sources:**
- LED:**
- 16w Module - 640 Lumens - 3000°K - 98CRI  
14° - 21° - 34° (-LED/16)
  - 30w Module - 1200 Lumens - 3000°K - 98CRI  
14° - 21° - 34° (-LED/30)

**LED Direct Replacement or Legacy Lamps:**

MR16LED (-BLD)	MR16 HALOGEN (-B)	MR16CMH (-BH)
AR111LED (-DLD)	AR111 HALOGEN (-D)	CDMR111 (-S)
PAR30LED (-GLD)	PAR30 (-G)	PAR30HID (-H)
PAR38LED (-JLD)	PAR38 (-J)	PAR38HID (-K)



**Model # example: MLS 2 LED/30 x TI - RD - SM**

