

Modular Multiples®

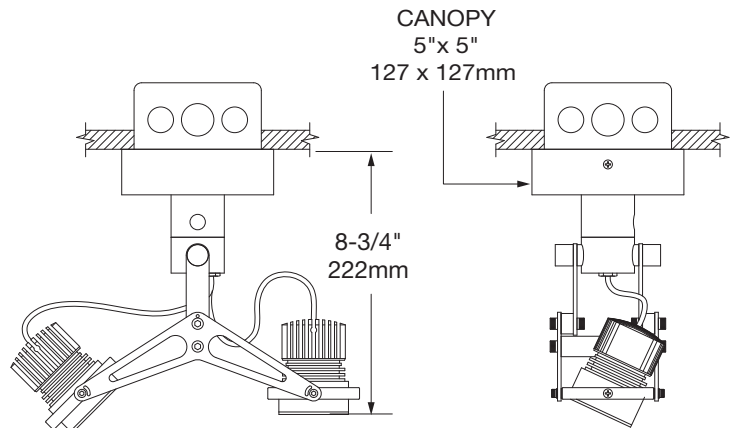
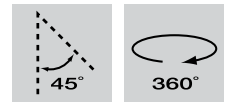
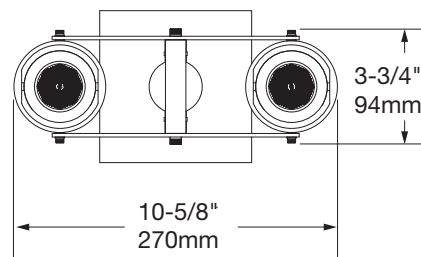
Boomerang Surface Mounted

Contemporary fixtures for unique installations. Superior design, materials, manufacture, and customization make Boomerang fixtures high tech and high performance.

Two 16w Lamps



MBS2-LED-516-21-6-TI-S
Modular Multiples® Boomerang Series,
two 16w LED lamp, stainless steel, transformer
incorporated, surface canopy configuration shown.
Other configurations available.



Modular Multiples®

Boomerang Surface Mounted

Configurations: 1, 2, 4 light units standard

Housing: Extruded and machined aluminum body and 16 gauge stainless steel canopy

Finishes:

- Stainless steel / satin nickel rings and canopy with silver powder coated accent pieces standard
- Powder coated custom colors available

Electrical:

- Internal electronic power supply(s) / transformer(s) / ballast(s)
- Dimmable (not applicable on HID products)
- One power supply / transformer per lamp allowing for multi-circuit wiring
- 120v and 277v available
- Listed to UL1598 standards

Lamping

Elements™ LED Modules

16w LED-516-14	16w LED-516-21	16w LED-516-34
30w LED-530-14	30w LED-530-21	30w LED-530-34

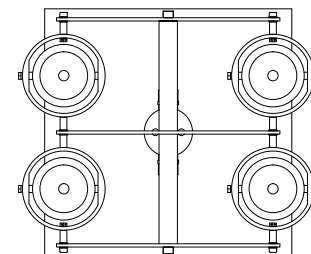
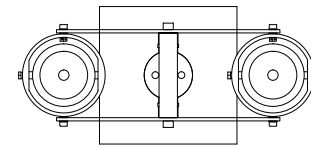
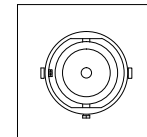
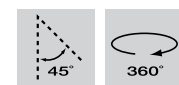
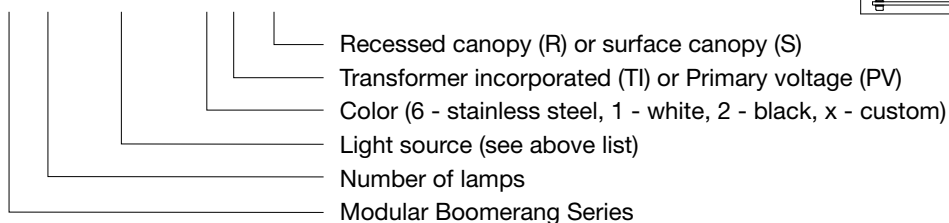
Mounting: Recessed or surface mounted canopies available

Options:

- Patented die-cast aluminum ring sets and locking devices
- Filter media
 - LED modules accept one 1/8" thick filter
 - LED direct replacement and legacy lamps accept up to two 1/8" thick filters

Model # example:

MBS 2 LED-530-21 x TI - R



Modular International, Inc.



Elements™ 16w LED Module

16_w

Model : LED-516

Wattage: 16

Lumens: 640 at 3000°K

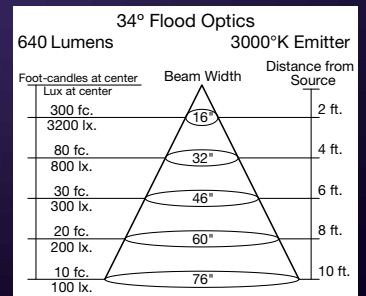
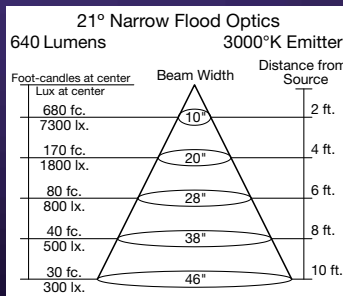
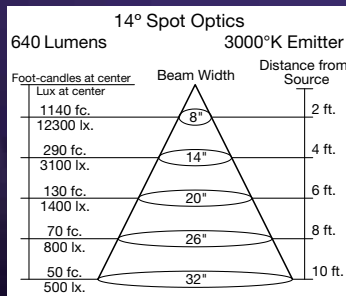
Equivalent : 50w MR16

Kelvin Temperature: 2850°K or 3000°K (+/- 2%)

Standard CRI: 95

Accessories and customization available: Tuning, dimming, beam angles, Kelvin temperature, shielding and filtering

Beam Angles: 14° Spot, 21° Narrow Flood, 34° Flood, 6° beam angle also available



Elements™ 30w LED Module

30_w

Model : LED-530

Wattage: 30

Lumens: 1200 at 3000°K

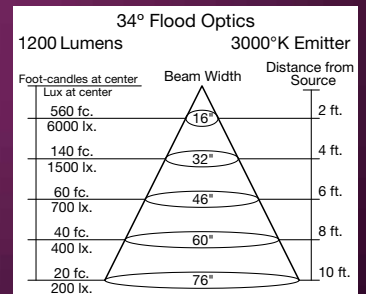
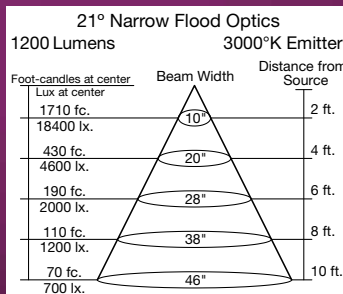
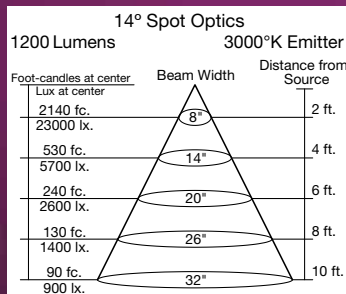
Equivalent : 20w MR16 Metal Halide

Kelvin Temperature: 2850°K or 3000°K (+/- 2%)

Standard CRI: 95

Accessories and customization available: Tuning, dimming, beam angles, Kelvin temperature, shielding and filtering

Beam Angles: 14° Spot, 21° Narrow Flood, 34° Flood, 6° beam angle also available



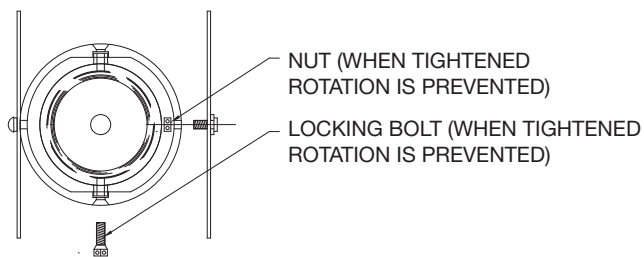
Modular Multiples®

Fixture Options

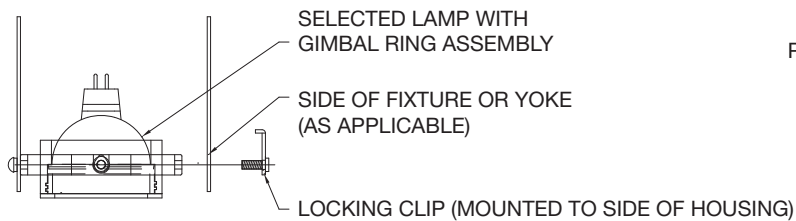
Modular accessories are used individually or in inventive combinations to shield brightness, reduce glare, vary beam patterns, retain direction, and alter color. Dimensions of all fixture options vary with lamp size.

Ring Sets and Locking Devices (PATENTED)

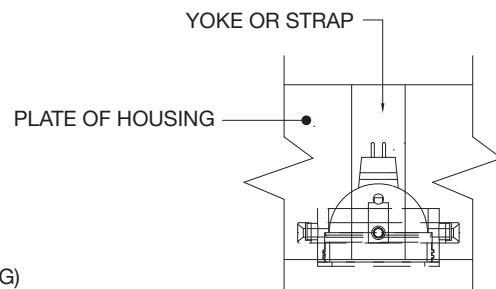
ADD -LM TO END OF MODEL NUMBER



BOTTOM VIEW



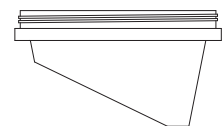
FRONT VIEW



SIDE VIEW

Shielding Options

ADD SHIELDING OPTION CODE (BELOW) TO END OF MODEL NUMBER



FILTER RING (STANDARD)

SHIELDING CONE (-SC)

SHIELDING CYLINDER (-CY)

WALL WASH CONE (-WWC)

Modular Multiples®

Fixture Options

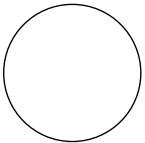
Modular accessories are used individually or in inventive combinations to shield brightness, reduce glare, vary beam patterns, retain direction, and alter color. Fixture option dimensions vary with lamp size.

Filter Media

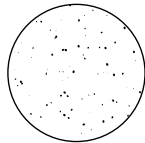
ADD FILTER MEDIA CODE (BELOW) TO END OF MODEL NUMBER

LED modules accept one 1/8" thick filter. LED direct replacement and legacy lamps accept up to two 1/8" thick filters.

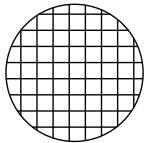
CLEAR
GLASS (-CG)



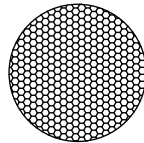
DIFFUSING
SPREAD (-DS)



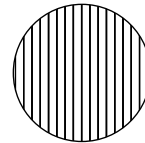
CUBE CELL
LOUVER (-CL)



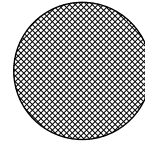
HEXCELL
LOUVER (-HL)



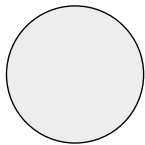
LINEAR
SPREAD (-LS)



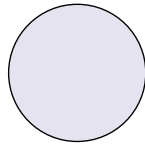
PRISMATIC WIDE
SPREAD (-PS)



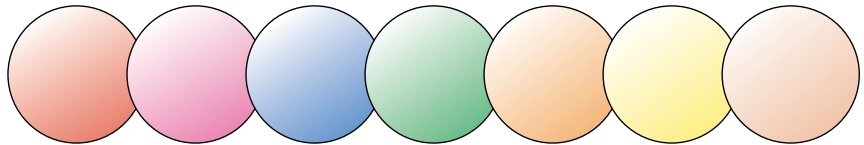
SATIN ETCHED
(-SE)



UV BLOCKING
(-UB)



DICHROIC



RED
(-DR)

MAGENTA
(-DM)

BLUE
(-DB)

GREEN
(-DG)

AMBER
(-DA)

YELLOW
(-DY)

PEACH
(-DP)